

## CMS MOTORHOME INSPECTION FORM

### General Information

Make & Model	Auto-Trail Cheyenne 630SE
Reg Number - NO GAP	WA06EZC
HPI Clear	Yes
VAT	No
Engine Size	2.8
BHP	123
Transmission	Manual
Vehicle Weight (kg)	3500 kg
Miles or KM	Miles
Mileage	63272
Confirm miles (within 5,000)	Yes
Is Mileage Warranted	Yes
Engine Keys Count	2
V5 present	Yes
V5 VIN Match	Yes

### Engine Bay

Fluid levels correct?	Yes
Oil/Coolant Contamination	No
Engine bay check	Pass

## CMS MOTORHOME INSPECTION FORM

### Mechanical Inspection

Brake Pedal Pressure Pass	Yes
Handbrake Test Pass	Yes
Static Gear Selection Pass	Yes
Clutch Slip Test Pass	Yes
Steering Noise	No
Engine Noise	No

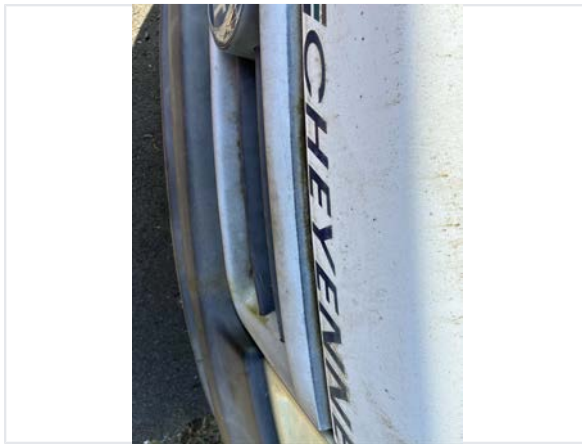
### Internal Layout

Does internal look original?	Yes
Berths	2
Belts	2
Bed Options	Bench Seats
Lounge Layout	Bench Seats
Layout Correct	Yes
Further Comments	N/A

## CMS MOTORHOME INSPECTION FORM

### Exterior Inspection

External Extras	Awning, Ladder, Reversing camera, Solar panel, Tow bar, Electric step, Bike Rack, BBQ point
Other External Extras	N/A
Decals	Need attention
Decals Further Info	Faded



Any Damage Found	Yes
Damage Further Info	Chips and paint peel on bonnet // Bumper only peeling near side front // Overspray from previous repair on pillar behind passenger door // Tow bar bracket rusting // Dent on off side just above rear window // Glazing and cracking on rear wheel arch off side // Scratch just behind hab window off side // Cover damaged behind gas locker off side // Paint peel on passenger door





Windscreen	No damage
Alloy Wheels	N/A
Tyres illegal/cracking/out of date	Yes
Tyre Further Info	Tyres cracked



Electric Step	Fully Working
Self levelling work	N/A
Pop top canvas damage	N/A

## CMS MOTORHOME INSPECTION FORM

### Internal Inspection

Internal Extras	Bluetooth, DAB radio, Oven, Tv(s), Upgraded stereo, Cruise control, Cab blinds, Cab curtains, Carpets
Other Extras	N/A
Electrics turn on	Yes
Control panel damaged	No
Stereo turn on	Yes
Smell or signs of smoking	No
Cushions correct	Yes
Boiler present	Yes
Overhead lockers ready	Yes
Internal Damage	Yes
Damage Info	Shower wall cracked where shower rail joins // Chip on worktop // Carpet stain



### Damp Inspection

Damp (visible/soft)	Yes
Damp Info	Near side wall red staining on top of bench seats
Floor damp/spongy/damaged	No

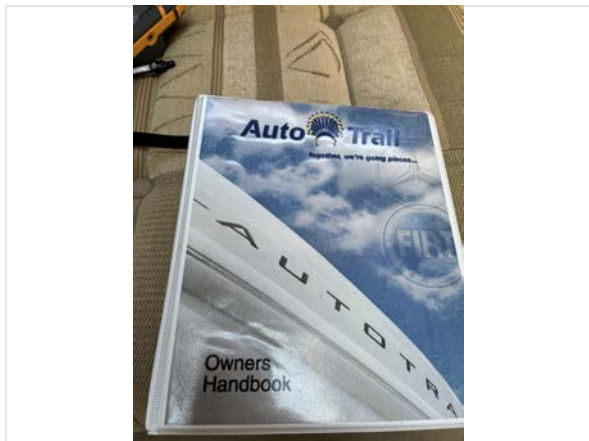




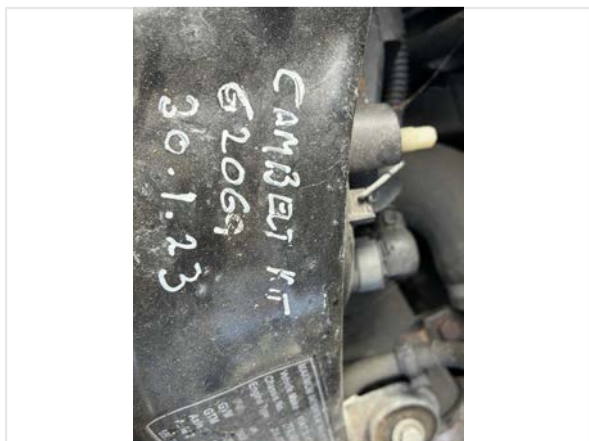
## CMS MOTORHOME INSPECTION FORM

### Paperwork

Manuals present	Yes
-----------------	-----



Engine Service History	None
Cam belt changed	Yes
Cam belt info	2023 change of belt
Habitation service reports	None



### Test Drive & Sign Off

Test drive - 10 mins	Pass
Engine lights	No
Dashboard ghosting/Mileage flashing	No
V5 tested on DVLA	Yes
Completed by	Alan Wileman
Sign-off Date	2026-04-29