

CMS MOTORHOME INSPECTION FORM

General Information

Make & Model	Auto-Sleepers Broadway EK
Reg Number - NO GAP	VX59FHF
HPI Clear	Yes
VAT	No
Engine Size	2.2
BHP	128
Transmission	Manual
Vehicle Weight (kg)	3500
Miles or KM	Miles
Mileage	23090
Confirm miles (within 5,000)	Yes
Is Mileage Warranted	Yes
Engine Keys Count	2
V5 present	Yes
V5 VIN Match	Yes

Engine Bay

Fluid levels correct?	Yes
Oil/Coolant Contamination	No
Engine bay check	Pass

CMS MOTORHOME INSPECTION FORM

Mechanical Inspection

Brake Pedal Pressure Pass	Yes
Handbrake Test Pass	Yes
Static Gear Selection Pass	Yes
Clutch Slip Test Pass	Yes
Steering Noise	No
Engine Noise	No

Internal Layout

Does internal look original?	Yes
Berths	2
Belts	2
Bed Options	Bench Seats
Lounge Layout	Bench Seats
Layout Correct	Yes
Further Comments	N/A

CMS MOTORHOME INSPECTION FORM

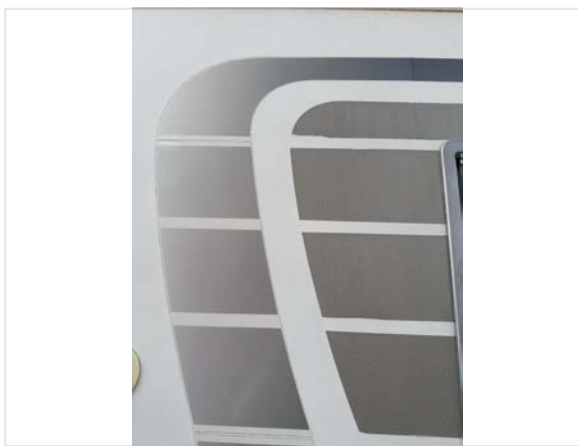
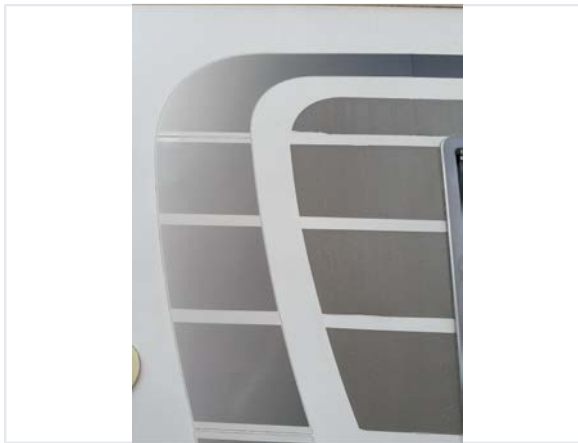
Exterior Inspection

Vehicle Profile Photos (Front, Rear & Both Sides):

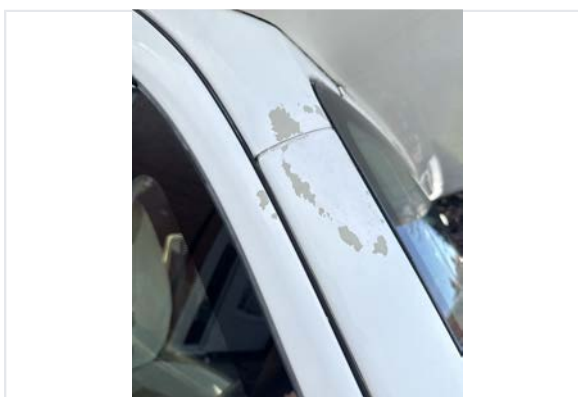
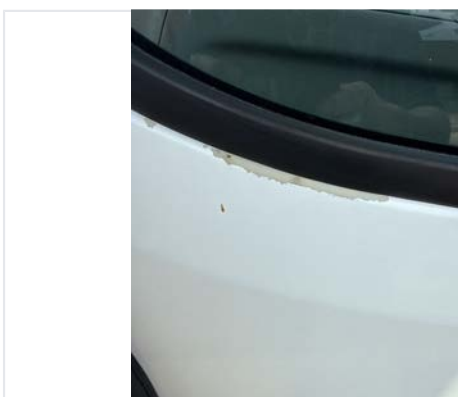




External Extras	Awning, Electric step, Ladder, Reversing camera, Roof rack, Solar panel, Tv Aerial
Other External Extras	N/A
Decals	Need attention
Decals Further Info	Cracking / faded o/s



Any Damage Found	Yes
Damage Further Info	Paint peel around windscreen + o/s door + n/s wing // scuff/scratch hab door // stress crack rear bumper // scuff o/s rear corner // o/s step damage



Windscreen	No damage
Alloy Wheels	N/A
Tyres illegal/cracking/out of date	No
Electric Step	Fully Working
Self levelling work	N/A
Pop top canvas damage	N/A

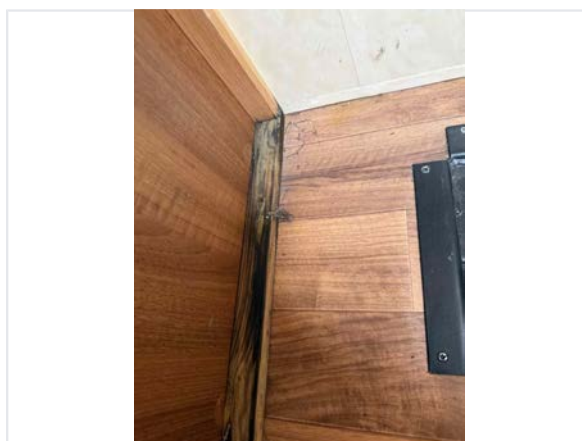
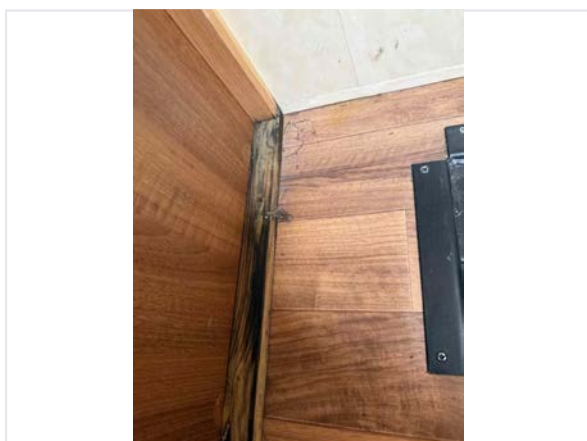
CMS MOTORHOME INSPECTION FORM

Internal Inspection

Internal Extras	cab A/C, Cruise control, Multifunction steering wheel, Oven, Part leather, Tv(s)
Other Extras	N/A
Electrics turn on	Yes
Control panel damaged	No
Stereo turn on	Yes
Smell or signs of smoking	No
Cushions correct	Yes
Boiler present	Yes
Overhead lockers ready	Yes
Internal Damage	No

Damp Inspection

Damp (visible/soft)	Yes
Damp Info	O /s window near front staining +99%
Floor damp/spongy/damaged	Yes
Floor Info	O /s behind drivers seat and behind n/s seat soft and 99%



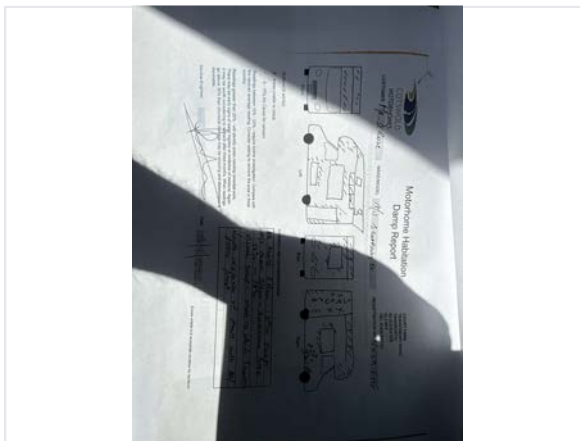
CMS MOTORHOME INSPECTION FORM

Paperwork

Manuals present	Yes
-----------------	-----



Engine Service History	Partial
Service Info	Three invoices 2014,17&19
Date of Last Engine Service	19/06/2019
Cam belt changed	N/A
Habitation service reports	Partial
Habitation Info	Invoiced to 2022
Date of Last Habitation Service	13/05/2022



Test Drive & Sign Off

Test drive - 10 mins	Pass
Engine lights	No
Dashboard ghosting/Mileage flashing	No
V5 tested on DVLA	Yes
Completed by	David Walker
Sign-off Date	2026-06-23