

CMS MOTORHOME INSPECTION FORM

General Information

Make & Model	Bürstner Nexxo T 660
Reg Number - NO GAP	T26TRN
HPI Clear	Yes
VAT	No
Engine Size	2.2litre
BHP	130
Transmission	Manual
Vehicle Weight (kg)	3600 kg
Miles or KM	Miles
Mileage	67905
Confirm miles (within 5,000)	Yes
Is Mileage Warranted	Yes
Engine Keys Count	1
V5 present	Yes
V5 VIN Match	Yes

Engine Bay

Fluid levels correct?	Yes
Oil/Coolant Contamination	No
Engine bay check	Pass

CMS MOTORHOME INSPECTION FORM

Mechanical Inspection

Brake Pedal Pressure Pass	Yes
Handbrake Test Pass	Yes
Static Gear Selection Pass	Yes
Clutch Slip Test Pass	Yes
Steering Noise	No
Engine Noise	No

Internal Layout

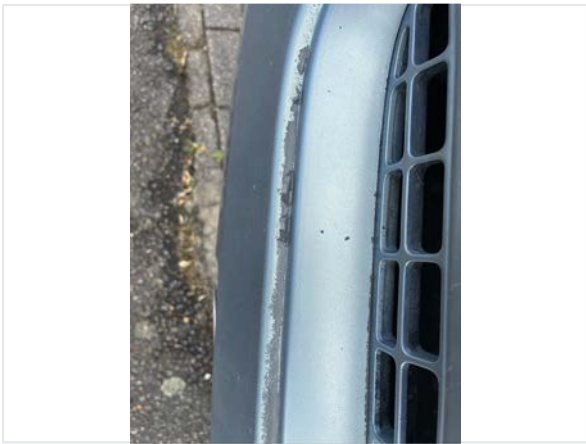
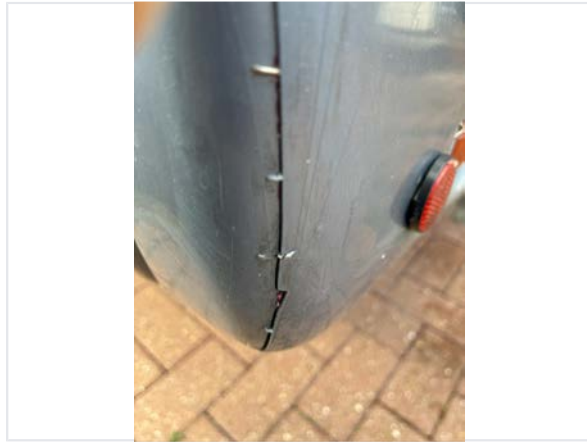
Does internal look original?	Yes
Berths	4
Belts	4
Bed Options	French Bed, Bench Seats
Lounge Layout	Half Dinette, Bench Seats
Layout Correct	Yes
Further Comments	N/A

CMS MOTORHOME INSPECTION FORM

Exterior Inspection

External Extras	Awning, Electric step, Solar panel, Bike Rack, Tv Aerial
Other External Extras	N/A
Decals	Good
Any Damage Found	Yes
Damage Further Info	Front bumper paint peel Fuel cap damaged Skirt near side peeling / faded Near side rear corner damaged scuffed Rear bumper near side damaged Scuffs scrapes to rear off side above light cluster Bumper damage off side rear





Windscreen

Chip(s) smaller than 10p

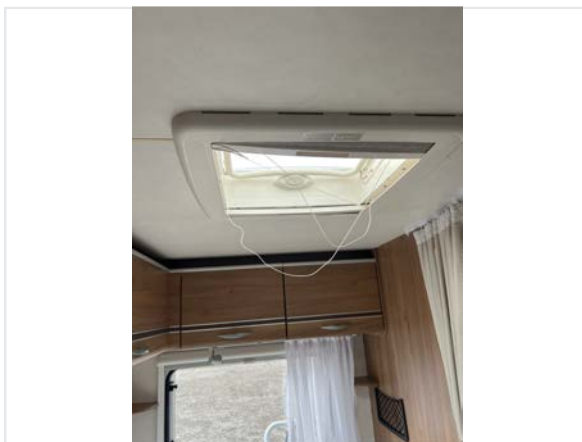
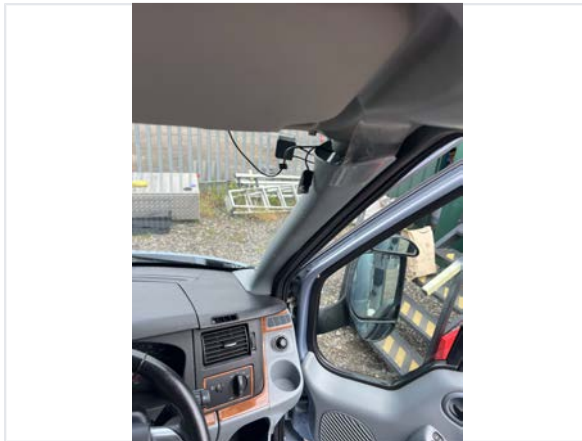
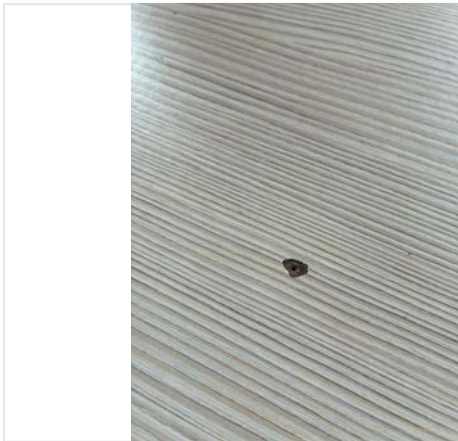


Alloy Wheels	N/A
Tyres illegal/cracking/out of date	No
Electric Step	Fully Working
Self levelling work	N/A
Pop top canvas damage	N/A

CMS MOTORHOME INSPECTION FORM

Internal Inspection

Internal Extras	cab A/C, Multifunction steering wheel, Tv(s), Cruise control, Oven
Other Extras	N/A
Electrics turn on	Yes
Control panel damaged	No
Stereo turn on	No
Smell or signs of smoking	No
Cushions correct	Yes
Boiler present	Yes
Overhead lockers ready	Yes
Internal Damage	Yes
Damage Info	Small damage to table // OS A-pillar trim loose // 2 skylight blinds broken



Damp Inspection

Damp (visible/soft)	No
---------------------	----

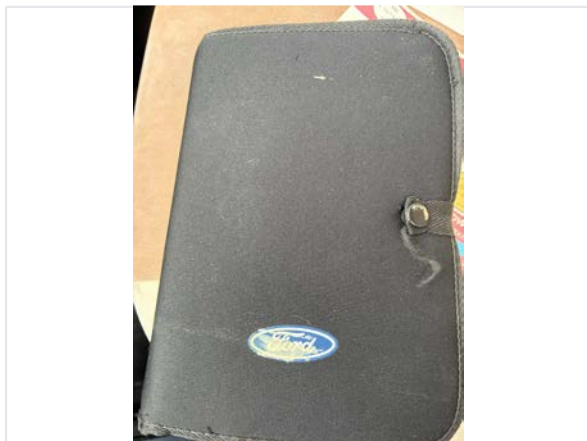
Small area of off side rear garage floor mouldy high readings



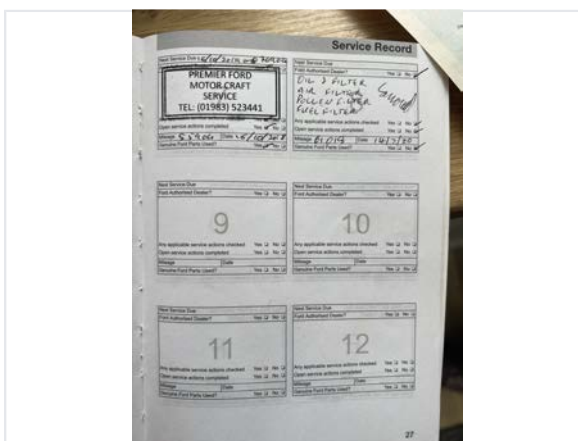
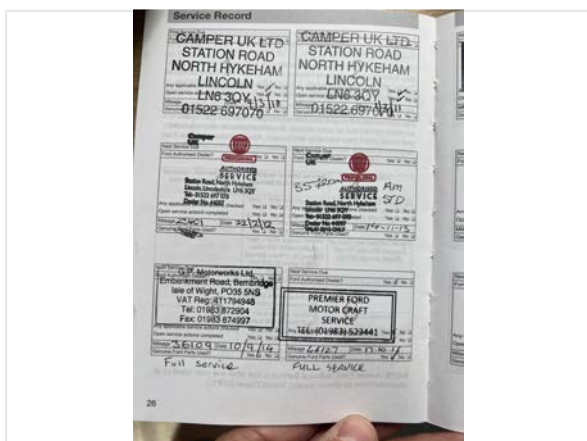
CMS MOTORHOME INSPECTION FORM

Paperwork

Manuals present	Yes
-----------------	-----



Engine Service History	Partial
Service Info	8 inputs in service book - latest stamp 2018
Date of Last Engine Service	14/7/2020
Cam belt changed	N/A
Habitation service reports	None



Test Drive & Sign Off

Test drive - 10 mins	Pass
----------------------	------

Yes	
Completed by	Alan Wileman
Sign-off Date	2026-05-13