

## CMS MOTORHOME INSPECTION FORM

### General Information

Make & Model	Bailey Approach 625
Reg Number - NO GAP	PX15ABN
HPI Clear	Yes
VAT	No
Engine Size	2.2litre
BHP	130bhp
Transmission	Manual
Vehicle Weight (kg)	3500 kg
Miles or KM	Miles
Mileage	9940
Confirm miles (within 5,000)	Yes
Is Mileage Warranted	Yes
Engine Keys Count	2
V5 present	Yes
V5 VIN Match	Yes

### Engine Bay

Fluid levels correct?	Yes
Oil/Coolant Contamination	No
Engine bay check	Pass

## CMS MOTORHOME INSPECTION FORM

### Mechanical Inspection

Brake Pedal Pressure Pass	Yes
Handbrake Test Pass	Yes
Static Gear Selection Pass	Yes
Clutch Slip Test Pass	Yes
Steering Noise	No
Engine Noise	No

### Internal Layout

Does internal look original?	Yes
Berths	2
Belts	2
Bed Options	Bench Seats
Lounge Layout	Bench Seats, U-Shaped Rear Lounge
Layout Correct	Yes
Further Comments	N/A

## CMS MOTORHOME INSPECTION FORM

### Exterior Inspection

External Extras	Bike Rack, Reversing camera, Solar panel
Decals	Need attention
Decals Further Info	Decals peeling and fading



Any Damage Found	Yes
Damage Further Info	Wheel arch cracked and piece missing off side rear Hab door out of shape at the bottom plus scrapes just on hab door corner Near side wheel arch working loose Sealant loose on back panel





Windscreen	No damage
Alloy Wheels	N/A
Tyres illegal/cracking/out of date	No
Electric Step	N/A
Self levelling work	N/A
Pop top canvas damage	N/A

## CMS MOTORHOME INSPECTION FORM

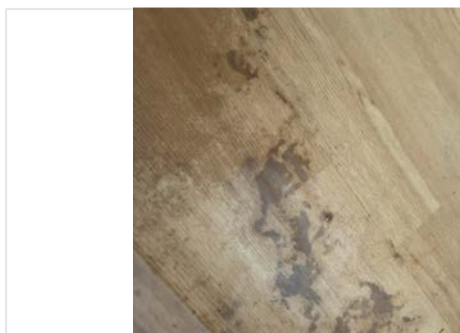
### Internal Inspection

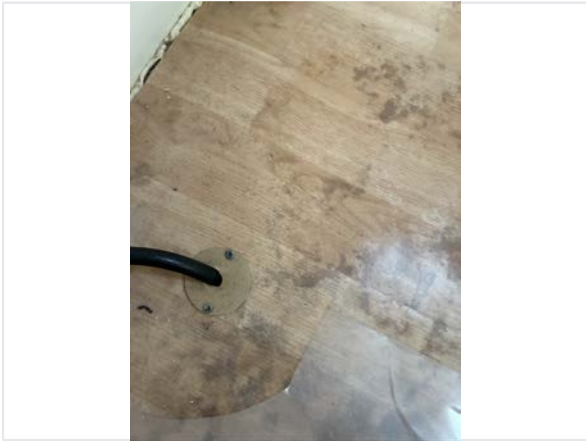
Internal Extras	Bluetooth, cab A/C, Cab blinds, Cruise control, DAB radio, Part leather, Oven, Multifunction steering wheel, Sat nav, Tv(s), Upgraded stereo
Other Extras	N/A
Electrics turn on	Yes
Control panel damaged	No
Stereo turn on	Yes
Smell or signs of smoking	No
Cushions correct	Yes
Boiler present	N/A
Overhead lockers ready	Yes
Internal Damage	Yes
Damage Info	Skylight cover cracked held together by tape



### Damp Inspection

Damp (visible/soft)	Yes
Damp Info	Floor heavily moulded and discoloured Under both bench seats floor lifting and coming away from wall High readings under sink on floor and high readings throughout the floor where possible to test
Floor damp/spongy/damaged	Yes
Floor Info	As above





## CMS MOTORHOME INSPECTION FORM

### Paperwork

Manuals present	Yes
Engine Service History	None
Cam belt changed	No
Habitation service reports	None

### Test Drive & Sign Off

Test drive - 10 mins	Pass
Engine lights	Yes
Engine Lights Info	Tpms light on
Dashboard ghosting/Mileage flashing	Yes
V5 tested on DVLA	Yes
Completed by	Alan Wileman
Sign-off Date	2026-04-17