

## CMS MOTORHOME INSPECTION FORM

### General Information

Make & Model	Auto-Trail Cherokee
Reg Number - NO GAP	HX60GBF
HPI Clear	Yes
VAT	No
Engine Size	2.3L
BHP	128bhp
Transmission	Manual
Vehicle Weight (kg)	3.5 T
Miles or KM	Miles
Mileage	29465
Confirm miles (within 5,000)	Yes
Is Mileage Warranted	Yes
Engine Keys Count	1
V5 present	Yes
V5 VIN Match	Yes

### Engine Bay

Fluid levels correct?	Yes
Oil/Coolant Contamination	No
Engine bay check	Pass

## CMS MOTORHOME INSPECTION FORM

### Mechanical Inspection

Brake Pedal Pressure Pass	Yes
Handbrake Test Pass	Yes
Static Gear Selection Pass	Yes
Clutch Slip Test Pass	Yes
Steering Noise	No
Engine Noise	No

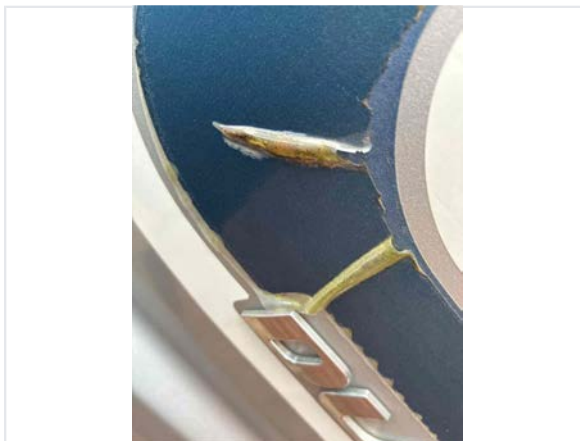
### Internal Layout

Does internal look original?	Yes
Berths	4
Belts	4
Bed Options	Bench Seats, French Bed
Lounge Layout	Bench Seats, Half Dinette
Layout Correct	Yes
Further Comments	N/A

## CMS MOTORHOME INSPECTION FORM

### Exterior Inspection

External Extras	Alloys, Awning, Bike Rack, Electric step, Gaslow, Reversing camera, Solar panel, Tv Aerial
Decals	Need attention
Decals Further Info	Decals poor



Any Damage Found	Yes
Damage Further Info	Scuff on off side front bumper Scratch on off side low locker Crack on pillar just behind drivers door Cracking on off side rear pillar Cracking on rear bumper as described

Poor repair job on pillar behind passenger door  
Scratches to passenger door  
Delamination to near side panel under head light





Windscreen	No damage
Alloy Wheels	Good
Tyres illegal/cracking/out of date	No
Electric Step	Fully Working
Self levelling work	N/A
Pop top canvas damage	N/A

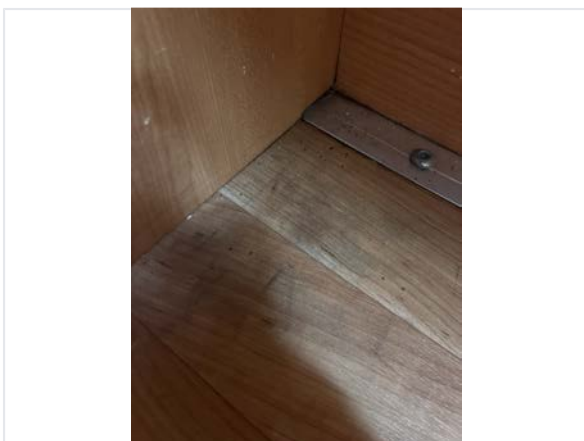
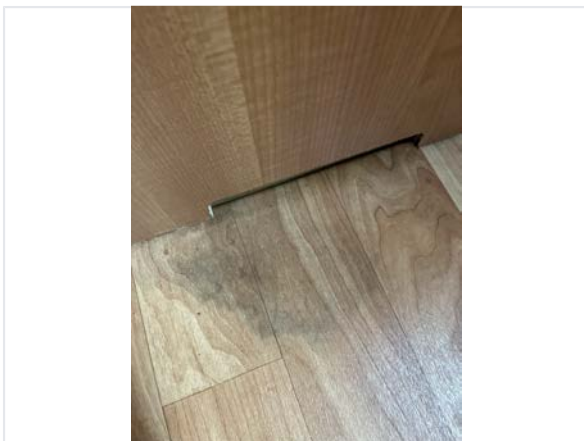
## CMS MOTORHOME INSPECTION FORM

### Internal Inspection

Internal Extras	cab A/C, Cab blinds, Cruise control, Oven, Tv(s)
Other Extras	N/A
Electrics turn on	Yes
Control panel damaged	No
Stereo turn on	Yes
Smell or signs of smoking	No
Cushions correct	Yes
Boiler present	N/A
Overhead lockers ready	Yes
Internal Damage	No

### Damp Inspection

Damp (visible/soft)	Yes
Damp Info	Damp under off side front bench seat on floor High readings on rear wall in garage / under French bed
Floor damp/spongy/damaged	Yes
Floor Info	High readings under both bench seats





## CMS MOTORHOME INSPECTION FORM

### Paperwork

Manuals present	Yes
Engine Service History	None
Cam belt changed	Yes
Cam belt info	When customer brought vehicle
Habitation service reports	None

### Test Drive & Sign Off

Test drive - 10 mins	Pass
Engine lights	No
Dashboard ghosting/Mileage flashing	No
V5 tested on DVLA	Yes
Completed by	Alan Wileman
Sign-off Date	2026-03-12