

## CMS MOTORHOME INSPECTION FORM

### General Information

Make & Model	Autotrail Mohawk
Reg Number - NO GAP	MX11NHL
HPI Clear	Yes
VAT	No
Engine Size	2.3
BHP	150
Transmission	Manual
Miles or KM	Miles
Mileage	22366
Confirm miles (within 5,000)	Yes
Is Mileage Warranted	Yes
Engine Keys Count	2
V5 present	Yes
V5 VIN Match	Yes

### Engine Bay

Fluid levels correct?	Yes
Oil/Coolant Contamination	No
Engine bay check	Pass

## CMS MOTORHOME INSPECTION FORM

### Mechanical Inspection

Brake Pedal Pressure Pass	Yes
Handbrake Test Pass	Yes
Static Gear Selection Pass	Yes
Clutch Slip Test Pass	Yes
Steering Noise	No
Engine Noise	No

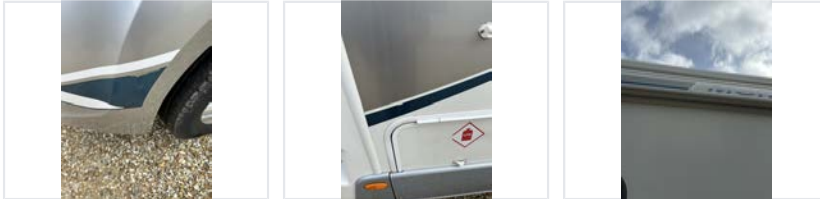
### Internal Layout

Does internal look original?	Yes
Berths	4
Belts	2
Bed Options	Bench Seats, Transverse Bed
Lounge Layout	Bench Seats
Layout Correct	Yes
Further Comments	No

## CMS MOTORHOME INSPECTION FORM

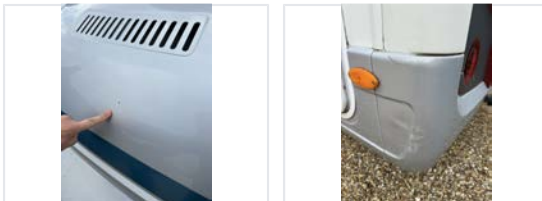
### Exterior Inspection

External Extras	Awning, Alloys, Electric step, Tow bar, Reversing camera, Ladder
Decals	Need attention
Decals Further Info	Peeling on NSF and above gas locker // Slightly cracking on awning and O/S top strip



+1 more photo(s) available

Any Damage Found	Yes
Damage Further Info	Small dent on bonnet // Light damage to NSR bumper corner



Windscreen	No damage
Alloy Wheels	Good
Tyres illegal/cracking/out of date	No
Damp floor underneath	No
Electric Step	Fully Working
Self levelling work	N/A
Pop top canvas damage	N/A

## CMS MOTORHOME INSPECTION FORM

### Internal Inspection

Internal Extras	cab A/C, Cab blinds, Carpets, Cruise control, Oven, Tv(s)
Other Extras	N/A
Electrics turn on	Yes
Control panel damaged	No
Stereo turn on	No
Smell or signs of smoking	No
Cushions correct	Yes
Boiler present	Yes
Overhead lockers ready	Yes
Internal Damage	No

### Damp Inspection

Damp (visible/soft)	Yes
Damp Info	Light staining on roof behind front skylight
Floor damp/spongy/damaged	No



## CMS MOTORHOME INSPECTION FORM

### Paperwork

Manuals present	Yes
Engine Service History	Partial
Service Info	Latest: 02/07/2019
Cam belt changed	No
Habitation service reports	Partial
Habitation Info	03/03/2025



### Test Drive & Sign Off

Test drive - 10 mins	Pass
Engine lights	No
Dashboard ghosting/Mileage flashing	No
Cruise control comment	N/A
V5 tested on DVLA	Yes
All stages completed	Yes
Trade plate number	L7056
Completed by	Leigh
Sign-off Date	2025-09-19
Price Guide	N/A