

## CMS MOTORHOME INSPECTION FORM

### General Information

|                              |                     |
|------------------------------|---------------------|
| Make & Model                 | Autotrail Dakota SE |
| Reg Number - NO GAP          | WA04RXX             |
| HPI Clear                    | Yes                 |
| VAT                          | No                  |
| Engine Size                  | 2.8                 |
| BHP                          | 120                 |
| Transmission                 | Manual              |
| Vehicle Weight (kg)          | 3850                |
| Miles or KM                  | Miles               |
| Mileage                      | 64487               |
| Confirm miles (within 5,000) | Yes                 |
| Is Mileage Warranted         | Yes                 |
| Engine Keys Count            | 2                   |
| V5 present                   | Yes                 |
| V5 VIN Match                 | Yes                 |

### Engine Bay

|                           |      |
|---------------------------|------|
| Fluid levels correct?     | Yes  |
| Oil/Coolant Contamination | No   |
| Engine bay check          | Pass |

## CMS MOTORHOME INSPECTION FORM

### Mechanical Inspection

|                            |     |
|----------------------------|-----|
| Brake Pedal Pressure Pass  | Yes |
| Handbrake Test Pass        | Yes |
| Static Gear Selection Pass | Yes |
| Clutch Slip Test Pass      | Yes |
| Steering Noise             | No  |
| Engine Noise               | No  |

### Internal Layout

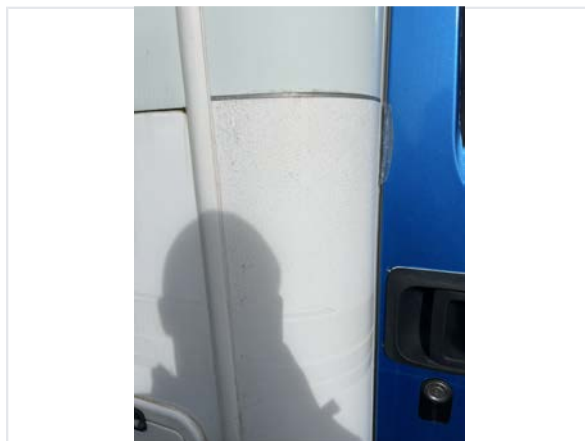
|                              |                         |
|------------------------------|-------------------------|
| Does internal look original? | Yes                     |
| Berths                       | 4                       |
| Belts                        | 2                       |
| Bed Options                  | Bench Seats, French Bed |
| Lounge Layout                | Bench Seats             |
| Layout Correct               | No                      |
| Further Comments             | N/A                     |



## CMS MOTORHOME INSPECTION FORM

### Exterior Inspection

|                     |  |
|---------------------|--|
| External Extras     | Air Suspension, Awning, Electric step, Habitation door lock, Solar panel, Tv Aerial, Tow bar, Ladder, Reversing camera, Gaslow, Front fog lights   |
| Decals              | Good   |
| Any Damage Found    | Yes  |
| Damage Further Info | Re sealed ns // scuff ns trim // stickers added // paint bubbling whole rear // stickers added rear // osr bumper damaged // paint bubbling os front // Two areas of delamination on NS // Cab is wrapped blue |



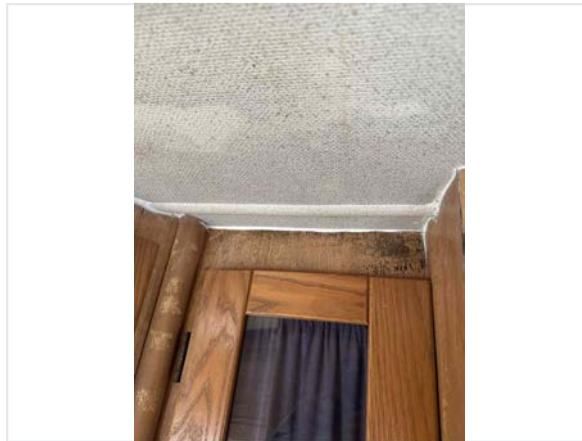


|                                    |               |
|------------------------------------|---------------|
| Windscreen                         | No damage     |
| Alloy Wheels                       | N/A           |
| Tyres illegal/cracking/out of date | No            |
| Electric Step                      | Fully Working |
| Self levelling work                | N/A           |
| Pop top canvas damage              | N/A           |

## CMS MOTORHOME INSPECTION FORM

### Internal Inspection

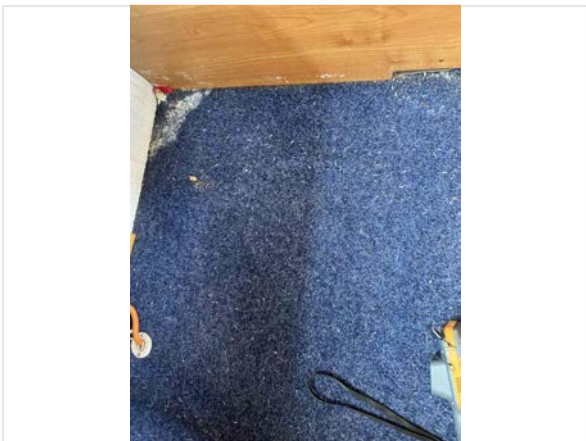
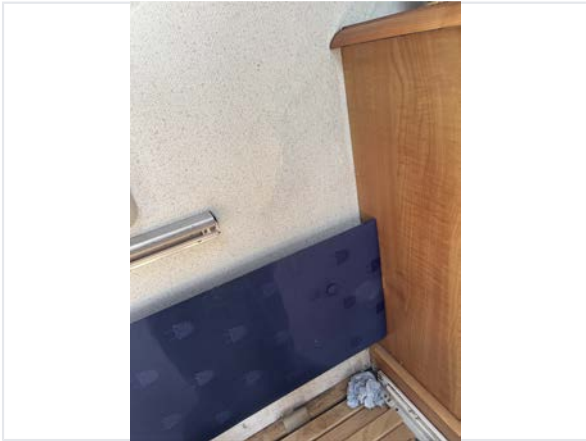
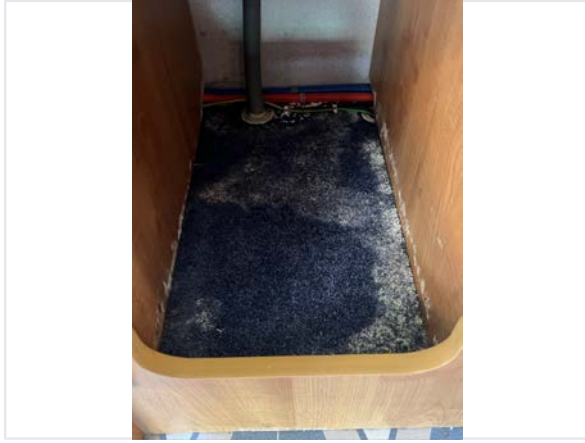
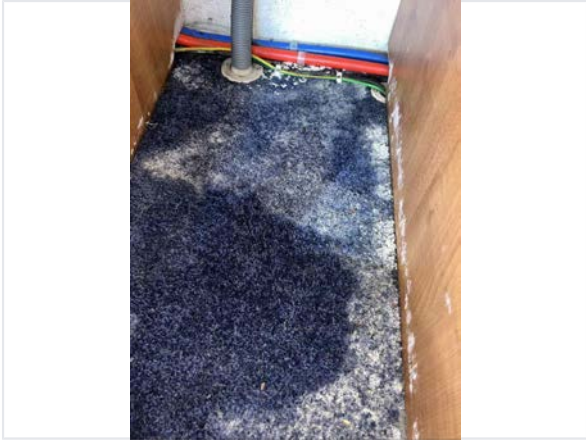
|                           |   |
|---------------------------|---|
| Internal Extras           | Oven, Cab curtains, DAB radio, Bluetooth, Alarm |
| Other Extras              | N/A   |
| Electrics turn on         | Yes   |
| Control panel damaged     | No  |
| Stereo turn on            | No  |
| Smell or signs of smoking | No  |
| Cushions correct          | Yes   |
| Boiler present            | Yes   |
| Overhead lockers ready    | Yes   |
| Internal Damage           | Yes   |
| Damage Info               | Toilet seat sticker // Rot on wood              |



### Damp Inspection

|                           |   |
|---------------------------|---|
| Damp (visible/soft)       | Yes   |
| Damp Info                 | Staining ns locker // staining os locker // blue above cab // blue down ns panel // blue under ns bench seats // blue os panel // blue under os bench seats // blue in the bathroom // multiple blue areas along the ceiling // |
| Floor damp/spongy/damaged | Yes   |
| Floor Info                | Carpet fitted below both bench seats and under kitchen sink   |





## CMS MOTORHOME INSPECTION FORM

### Paperwork

|                            |         |
|----------------------------|---------|
| Manuals present            | Yes     |
| Engine Service History     | Partial |
| Service Info               | N/A     |
| Cam belt changed           | Yes     |
| Cam belt info              | N/A     |
| Habitation service reports | None    |

### Test Drive & Sign Off

|                                     |                |
|-------------------------------------|----------------|
| Test drive - 10 mins                | Pass           |
| Engine lights                       | No             |
| Dashboard ghosting/Mileage flashing | N/A            |
| V5 tested on DVLA                   | Yes            |
| Completed by                        | Keenan Parnell |
| Sign-off Date                       | 2026-03-23     |