

CMS MOTORHOME INSPECTION FORM

General Information

Make & Model	Elddis Majestic 155
Reg Number - NO GAP	PO16CYU
HPI Clear	Yes
VAT	No
Engine Size	2.2
BHP	128bhp
Transmission	Manual
Vehicle Weight (kg)	3.5T
Miles or KM	Miles
Mileage	24723
Confirm miles (within 5,000)	Yes
Is Mileage Warranted	Yes
Engine Keys Count	2
V5 present	Yes
V5 VIN Match	Yes

Engine Bay

Fluid levels correct?	Yes
Oil/Coolant Contamination	No
Engine bay check	Pass

CMS MOTORHOME INSPECTION FORM

Mechanical Inspection

Brake Pedal Pressure Pass	Yes
Handbrake Test Pass	Yes
Static Gear Selection Pass	Yes
Clutch Slip Test Pass	Yes
Steering Noise	No
Engine Noise	No

Internal Layout

Does internal look original?	Yes
Berths	4
Belts	4
Bed Options	French Bed, Bench Seats
Lounge Layout	Half Dinette, Bench Seats
Layout Correct	Yes
Further Comments	N/A

CMS MOTORHOME INSPECTION FORM

Exterior Inspection

External Extras	Awning, Electric step, Front fog lights, Habitation door lock, Reversing camera, Solar panel, Tv Aerial
Decals	Good
Any Damage Found	Yes
Damage Further Info	Scratches on hab door // Crack on near side rear bumper // Dents on back of van // Damage to rear pillar off side near side marker // Damage to off side wheel arch // Damage to off side corner of roof



Windscreen	No damage
Alloy Wheels	N/A
Tyres illegal/cracking/out of date	No
Electric Step	Fully Working
Self levelling work	N/A
Pop top canvas damage	N/A

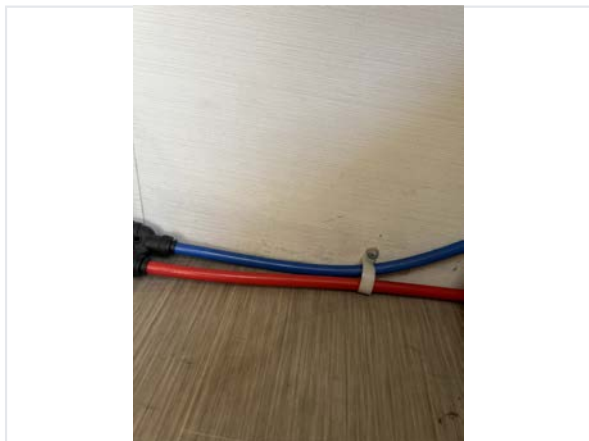
CMS MOTORHOME INSPECTION FORM

Internal Inspection

Internal Extras	Bluetooth, cab A/C, Cab blinds, Cab curtains, Cruise control, Multifunction steering wheel, Oven, Tv(s), Sat nav, DAB radio
Other Extras	N/A
Electrics turn on	Yes
Control panel damaged	No
Stereo turn on	Yes
Smell or signs of smoking	No
Cushions correct	Yes
Boiler present	N/A
Overhead lockers ready	Yes
Internal Damage	Yes
Damage Info	Worktop scuffed behind tap

Damp Inspection

Damp (visible/soft)	Yes
Damp Info	Blue staining under ns and rear panel under french bed // blue staining under ns bench seat //
Floor damp/spongy/damaged	Yes
Floor Info	Floor soft to the point of being close to be able to push your finger through under French bed





CMS MOTORHOME INSPECTION FORM

Paperwork

Manuals present	Yes
Engine Service History	Partial
Service Info	Last service in bca pack
Cam belt changed	No
Habitation service reports	Partial
Habitation Info	Last hab check photos

Test Drive & Sign Off

Test drive - 10 mins	Pass
Engine lights	No
Dashboard ghosting/Mileage flashing	No
V5 tested on DVLA	Yes
Completed by	Alan Wileman
Sign-off Date	2026-03-11