

## CMS MOTORHOME INSPECTION FORM

### General Information

Make & Model	Elddis Majestic 145
Reg Number - NO GAP	HX11FXZ
HPI Clear	Yes
VAT	No
Engine Size	2.2
BHP	120
Transmission	Manual
Miles or KM	Miles
Mileage	26703
Confirm miles (within 5,000)	Yes
Is Mileage Warranted	Yes
Engine Keys Count	2
V5 present	Yes
V5 VIN Match	Yes

### Engine Bay

Fluid levels correct?	Yes
Oil/Coolant Contamination	No
Engine bay check	Pass

## CMS MOTORHOME INSPECTION FORM

### Mechanical Inspection

Brake Pedal Pressure Pass	Yes
Handbrake Test Pass	Yes
Static Gear Selection Pass	Yes
Clutch Slip Test Pass	Yes
Steering Noise	No
Engine Noise	No

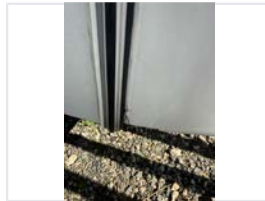
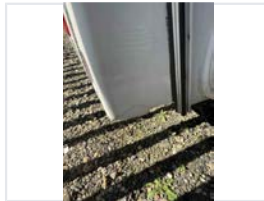
### Internal Layout

Does internal look original?	Yes
Berths	4
Belts	4
Bed Options	Overcab Bed, U Shape Rear
Lounge Layout	Two Forward Facing
Layout Correct	Yes
Further Comments	No

## CMS MOTORHOME INSPECTION FORM

### Exterior Inspection

External Extras	Awning, Electric step, Bike Rack, Reversing camera, Tv Aerial, Habitation door lock
Decals	Good
Any Damage Found	Yes
Damage Further Info	Crack in window o/s over cab // small amount of paint flake on o/s front wing // cracked rear bumper corners // multiple small age related dents



+2 more photo(s) available

Windscreen	No damage
Alloy Wheels	N/A
Tyres illegal/cracking/out of date	No
Damp floor underneath	No
Electric Step	Fully Working
Self levelling work	N/A
Pop top canvas damage	N/A

## CMS MOTORHOME INSPECTION FORM

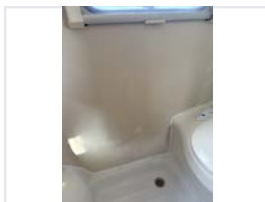
### Internal Inspection

Internal Extras	cab A/C, Cab curtains, Cruise control, Multifunction steering wheel, Oven
Other Extras	N/A
Electrics turn on	Yes
Control panel damaged	No
Stereo turn on	Yes
Smell or signs of smoking	No
Cushions correct	Yes
Boiler present	Yes
Overhead lockers ready	Yes
Internal Damage	Yes
Damage Info	Rear bed rail broken



### Damp Inspection

Damp (visible/soft)	Yes
Damp Info	Bathroom visibly damp and reading from 20- 60% // bottom of wall soft under dinette seats // stain and reading 20% o/s rear corner wall // mould and reading n/s over cab bed // visible signs of previous damp n/s rear wall area
Floor damp/spongy/damaged	No



+5 more photo(s) available

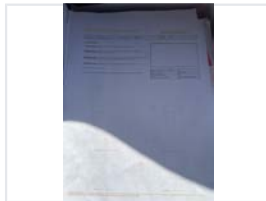
## CMS MOTORHOME INSPECTION FORM

### Paperwork

Manuals present	Yes
Engine Service History	Partial
Service Info	Stamped to 2022 Invoice for 24/25
Cam belt changed	N/A
Habitation service reports	Partial
Habitation Info	2022 and 2025



+1 more photo(s) available



### Test Drive & Sign Off

Test drive - 10 mins	Pass
Engine lights	No
Dashboard ghosting/Mileage flashing	No
Cruise control comment	N/A
V5 tested on DVLA	Yes
All stages completed	Yes
Trade plate number	L7056
Completed by	Daryl
Sign-off Date	2025-09-22
Price Guide	N/A