

CMS MOTORHOME INSPECTION FORM

General Information

Make & Model	Elddis Autoquest 120
Reg Number - NO GAP	HX10EZL
HPI Clear	Yes
VAT	No
Engine Size	2.2
BHP	99
Transmission	Manual
Vehicle Weight (kg)	3000
Miles or KM	Miles
Mileage	35298
Confirm miles (within 5,000)	Yes
Is Mileage Warranted	Yes
Engine Keys Count	2
V5 present	Yes
V5 VIN Match	Yes

Engine Bay

Fluid levels correct?	Yes
Oil/Coolant Contamination	No
Engine bay check	Pass

CMS MOTORHOME INSPECTION FORM

Mechanical Inspection

Brake Pedal Pressure Pass	Yes
Handbrake Test Pass	Yes
Static Gear Selection Pass	Yes
Clutch Slip Test Pass	Yes
Steering Noise	No
Engine Noise	No

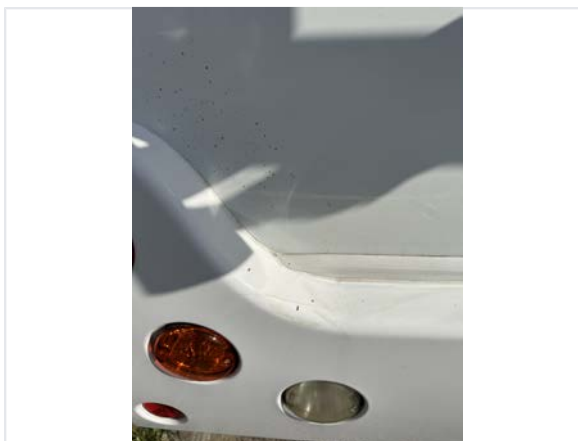
Internal Layout

Does internal look original?	Yes
Berths	2
Belts	2
Bed Options	U Shape Rear
Lounge Layout	U-Shaped Rear Lounge
Layout Correct	Yes
Further Comments	N/A

CMS MOTORHOME INSPECTION FORM

Exterior Inspection

External Extras	Bike Rack, Electric step, Reversing camera, Solar panel, Tv Aerial
Other External Extras	N/A
Decals	Good
Any Damage Found	Yes
Damage Further Info	Paint mark on bonnet and rust under lip of bonnet // Mark on OS overcab // Bobbling on bottom of habitation door // Pitting and two patches of delamination on NS panel // 3-4 small dinks on NS panel // Areas of pitting on rear // Hairline crack on NSR bumper // Marks on gas locker door



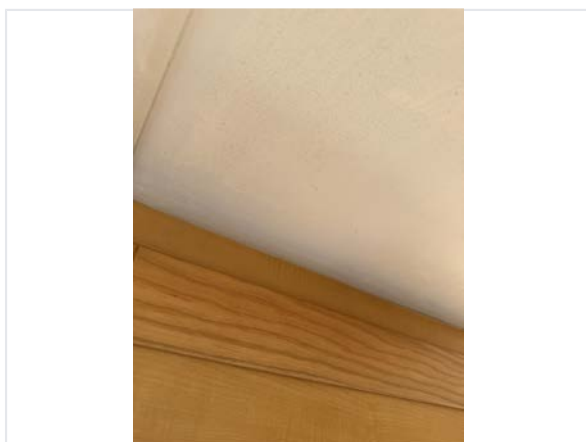
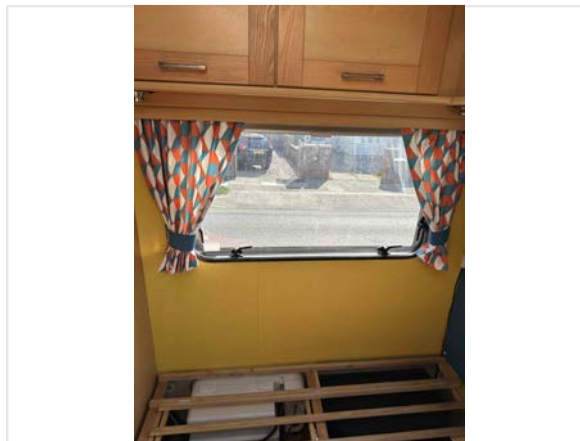


Windscreen	No damage
Alloy Wheels	N/A
Tyres illegal/cracking/out of date	No
Electric Step	Fully Working, Step is loose
Self levelling work	N/A
Pop top canvas damage	N/A

CMS MOTORHOME INSPECTION FORM

Internal Inspection

Internal Extras	Multifunction steering wheel, Oven, Cab curtains
Other Extras	N/A
Electrics turn on	Yes
Control panel damaged	No
Stereo turn on	Yes
Smell or signs of smoking	No
Cushions correct	Yes
Boiler present	Yes
Overhead lockers ready	Yes
Internal Damage	Yes
Damage Info	Rear walls have been painted yellow // Roof has been painted



Damp Inspection

Damp (visible/soft)	Yes
Damp Info	Roof above habitation door running into NS overcab is soft // Wall right side of habitation door is soft // Stain on roof before overcab // Stain on roof in front of middle vent //N/S

wall is overhead lockers is stained // Staining to lower walls NSR corner under bench // Cassette locker soft

Floor damp/spongy/damaged

Yes

Floor Info

Floor next to habitation door is soft



CMS MOTORHOME INSPECTION FORM

Paperwork

Manuals present	Yes
-----------------	-----



Engine Service History	Partial
Service Info	1 stamp
Date of Last Engine Service	17/05/2017
Cam belt changed	No
Habitation service reports	None



Test Drive & Sign Off

Test drive - 10 mins	Pass
Engine lights	No
Dashboard ghosting/Mileage flashing	No
V5 tested on DVLA	Yes
Completed by	Leigh Ireland
Sign-off Date	2026-05-25

