

CMS MOTORHOME INSPECTION FORM

General Information

Make & Model	Eura Mobil Terrestra
Reg Number - NO GAP	FJ17DAA
HPI Clear	Yes
VAT	No
Engine Size	2.3
BHP	150
Transmission	Automatic
Vehicle Weight (kg)	3650
Miles or KM	Miles
Mileage	15378
Confirm miles (within 5,000)	Yes
Is Mileage Warranted	Yes
Engine Keys Count	2
V5 present	Yes
V5 VIN Match	Yes

Engine Bay

Fluid levels correct?	No
More Info	Slightly low on oil
Oil/Coolant Contamination	No
Engine bay check	Pass

CMS MOTORHOME INSPECTION FORM

Mechanical Inspection

Brake Pedal Pressure Pass	Yes
Handbrake Test Pass	Yes
Static Gear Selection Pass	N/A
Clutch Slip Test Pass	Yes
Steering Noise	No
Engine Noise	No

Internal Layout

Does internal look original?	Yes
Berths	4
Belts	6
Bed Options	Overcab Bed, Transverse Bed, Bench Seats
Lounge Layout	Full Dinette
Layout Correct	Yes
Further Comments	N/A

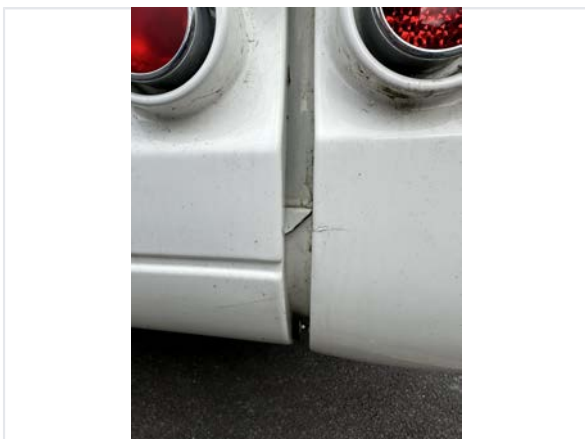
CMS MOTORHOME INSPECTION FORM

Exterior Inspection

External Extras	Awning, Alloys, LED daytime running lights, Electric step, Reversing camera, Solar panel, Tv Aerial
Other External Extras	N/A
Decals	Need attention
Decals Further Info	Some decals on NS torn



Any Damage Found	Yes
Damage Further Info	N/A





Windscreen	No damage
Alloy Wheels	Good
Tyres illegal/cracking/out of date	Yes
Tyre Further Info	Both rear tyres are perishing and dated 2015



Electric Step	Fully Working
Self levelling work	N/A
Pop top canvas damage	N/A

CMS MOTORHOME INSPECTION FORM

Internal Inspection

Internal Extras	cab A/C, Climate control, Cab blinds, Cruise control, Sat nav, Multifunction steering wheel, DAB radio, Bluetooth, Oven, Tv(s)
Other Extras	Additional TV next to bed
Electrics turn on	Yes
Control panel damaged	No
Stereo turn on	Yes
Smell or signs of smoking	No
Cushions correct	Yes
Boiler present	Yes
Overhead lockers ready	Yes
Internal Damage	Yes
Damage Info	Damage to table // Damage to floor in entrance // Overcab skylight and both window blinds are damaged // Wear and tear on drawer handles // Bench seat upholstery dirty // Patches on mould on rear wall fabric



Damp Inspection

Damp (visible/soft)	Yes
---------------------	-----

Damp Info	Staining next to overcab skylight
Floor damp/spongy/damaged	No

CMS MOTORHOME INSPECTION FORM

Paperwork

Manuals present	Yes
Engine Service History	None
Cam belt changed	No
Habitation service reports	None

Test Drive & Sign Off

Test drive - 10 mins	Pass
Engine lights	No
Dashboard ghosting/Mileage flashing	No
V5 tested on DVLA	Yes
Completed by	Leigh Ireland
Sign-off Date	2026-03-17