

## CMS MOTORHOME INSPECTION FORM

### General Information

Make & Model	Dethleffs Fortero A6975
Reg Number - NO GAP	CU08BXK
HPI Clear	Yes
VAT	No
Engine Size	2.4
BHP	140
Transmission	Manual
Miles or KM	Miles
Mileage	26862
Confirm miles (within 5,000)	Yes
Is Mileage Warranted	Yes
Engine Keys Count	2
V5 present	Yes
V5 VIN Match	Yes

### Engine Bay

Fluid levels correct?	Yes
Oil/Coolant Contamination	No
Engine bay check	Pass

## CMS MOTORHOME INSPECTION FORM

### Mechanical Inspection

Brake Pedal Pressure Pass	Yes
Handbrake Test Pass	Yes
Static Gear Selection Pass	Yes
Clutch Slip Test Pass	Yes
Steering Noise	No
Engine Noise	No

### Internal Layout

Does internal look original?	Yes
Berths	6
Belts	4
Bed Options	Overcab Bed, Transverse Bed
Lounge Layout	Half Dinette
Layout Correct	Yes
Further Comments	No

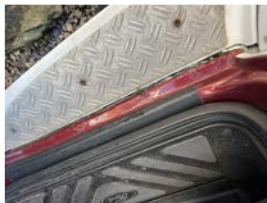
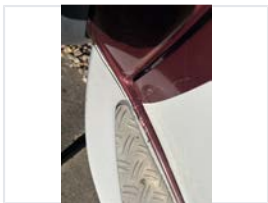
## CMS MOTORHOME INSPECTION FORM

### Exterior Inspection

External Extras	Awning, Electric step, BBQ point, Bike Rack, Reversing camera, Ladder, Parking sensors, Roof rack, Tv Aerial, Front fog lights
Decals	Need attention
Decals Further Info	Slight mark to NS behind cab door



Any Damage Found	Yes
Damage Further Info	Starting to rust behind cab steps // Damage to NS marker light // 2 small dents on OS // dent to NSF wheel trim



+3 more photo(s) available

Windscreen	No damage
Alloy Wheels	N/A
Tyres illegal/cracking/out of date	Yes
Tyre Further Info	Some Dated 2007 // no perishing and healthy tread
Damp floor underneath	No
Electric Step	Fully Working
Self levelling work	N/A
Pop top canvas damage	N/A

## CMS MOTORHOME INSPECTION FORM

### Internal Inspection

Internal Extras	Cruise control, Multifunction steering wheel, Oven, cab A/C, Cab blinds, Carpets
Other Extras	N/A
Electrics turn on	Yes
Control panel damaged	No
Stereo turn on	Yes
Smell or signs of smoking	No
Cushions correct	Yes
Boiler present	Yes
Overhead lockers ready	Yes
Internal Damage	No

### Damp Inspection

Damp (visible/soft)	No
Floor damp/spongy/damaged	No

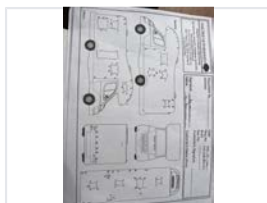
## CMS MOTORHOME INSPECTION FORM

### Paperwork

Manuals present	Yes
Engine Service History	Partial
Service Info	Latest 2025 // 6 recent invoices done annually // 5 stamps in book
Cam belt changed	No
Habitation service reports	Partial
Habitation Info	Latest 2016



+3 more photo(s) available



### Test Drive & Sign Off

Test drive - 10 mins	Pass
Engine lights	No
Dashboard ghosting/Mileage flashing	N/A
Cruise control comment	N/A
V5 tested on DVLA	Yes
All stages completed	Yes
Trade plate number	L7058
Completed by	Andrew Rowe
Sign-off Date	2025-09-24
Price Guide	N/A