

CMS MOTORHOME INSPECTION FORM

General Information

Make & Model	Elddis Impressa 185
Reg Number - NO GAP	LK17GDF
HPI Clear	Yes
VAT	No
Engine Size	2.0
BHP	130
Transmission	Manual
Miles or KM	Miles
Mileage	17029
Confirm miles (within 5,000)	Yes
Is Mileage Warranted	Yes
Engine Keys Count	2
V5 present	Yes
V5 VIN Match	Yes

Engine Bay

Fluid levels correct?	Yes
Oil/Coolant Contamination	No
Engine bay check	Pass

CMS MOTORHOME INSPECTION FORM

Mechanical Inspection

Brake Pedal Pressure Pass	Yes
Handbrake Test Pass	Yes
Static Gear Selection Pass	Yes
Clutch Slip Test Pass	Yes
Steering Noise	No
Engine Noise	No

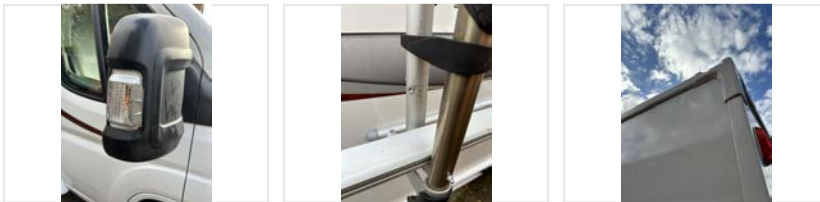
Internal Layout

Does internal look original?	Yes
Berths	4
Belts	4
Bed Options	Bench Seats, Single Beds
Lounge Layout	Bench Seats
Layout Correct	Yes
Further Comments	No

CMS MOTORHOME INSPECTION FORM

Exterior Inspection

External Extras	Awning, Tv Aerial, Reversing camera, Bike Rack, Solar panel
Decals	Good
Any Damage Found	Yes
Damage Further Info	O/S mirror lense damage // Small crease on rear at top // Small dent on bike rack

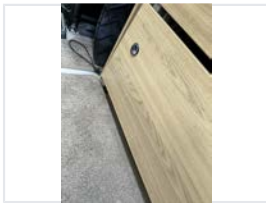


Windscreen	No damage
Alloy Wheels	N/A
Tyres illegal/cracking/out of date	Yes
Tyre Further Info	2016 but have good tread
Damp floor underneath	No
Electric Step	N/A
Self levelling work	N/A
Pop top canvas damage	N/A

CMS MOTORHOME INSPECTION FORM

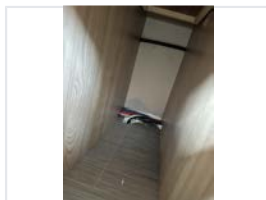
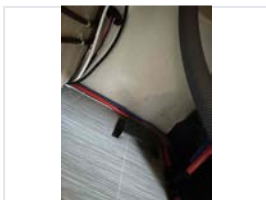
Internal Inspection

Internal Extras	Auto headlights, cab A/C, Bluetooth, DAB radio, Cruise control, Multifunction steering wheel, Oven, Carpets, Cab blinds, Cab curtains
Other Extras	N/A
Electrics turn on	Yes
Control panel damaged	No
Stereo turn on	Yes
Smell or signs of smoking	No
Cushions correct	No
Boiler present	Yes
Overhead lockers ready	Yes
Internal Damage	Yes
Damage Info	Scratches on wood under O/S bench seat

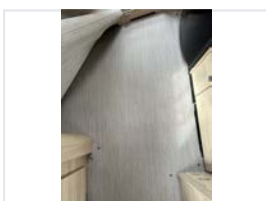


Damp Inspection

Damp (visible/soft)	Yes
Damp Info	Blue staining and soft wall under kitchen area // Blue staining and pimpling on wall under O/S single bed // Blue staining on wall under N/S single bed and next to habitation door
Floor damp/spongy/damaged	Yes
Floor Info	Floor slightly delaminated in kitchen area



+3 more photo(s) available



CMS MOTORHOME INSPECTION FORM

Paperwork

Manuals present	Yes
Engine Service History	Full
Service Info	FSH Latest: 16/07/2025
Cam belt changed	No
Habitation service reports	Partial
Habitation Info	Latest: 23/08/2023



Test Drive & Sign Off

Test drive - 10 mins	Pass
Engine lights	Yes
Engine Lights Info	tyre pressure light on dash
Dashboard ghosting/Mileage flashing	No
Cruise control comment	N/A
V5 tested on DVLA	Yes
All stages completed	Yes
Trade plate number	L7057
Completed by	Leigh
Sign-off Date	2025-09-24
Price Guide	N/A